

LEE EDUCATOR

Lee miniature Educators are designed to pump or transfer fluids without the use of seals, electrical/mechanical drives, or any moving parts. Available in .187", .250" and .375" diameter models, their compact, maintenance-free design makes Lee Educators ideal for use in harsh, or corrosive environments, where maintenance would be difficult, or where space and weight are important design considerations.

Constructed entirely of stainless steel, the educators are self-retained for easy installation, and are offered in a wide performance range for both liquid and gas applications. Every Lee Educator is 100% tested to ensure reliable, consistent performance and long life.

For custom designs and/or performance specifications for your particular application, please consult your Lee Sales Engineer.

Typical Applications

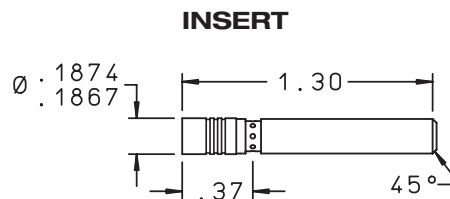
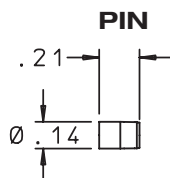
- Vacuum Pump
- Fluid Mixing
- Dilution/Sampling
- Fluid Transfer
- Atomizing Nozzle

Benefits

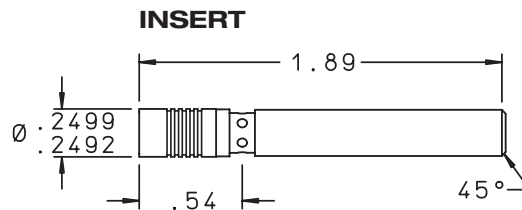
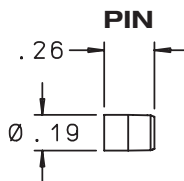
- Maintenance Free
- No Moving Parts
- No O-rings or Seals
- No Electrical/Mechanical Drive Connections
- All Stainless Steel Construction
- Self-Retained For Easy Installation
- Miniature Size, Light Weight



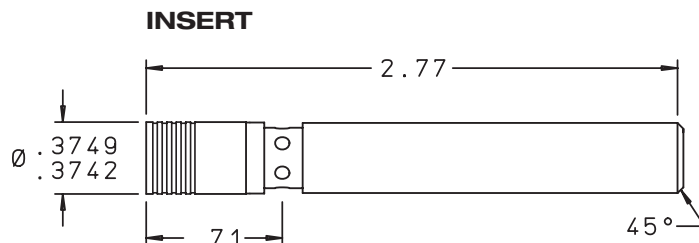
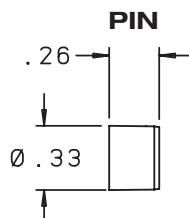
0.187" Diameter Model*



0.250" Diameter Model*

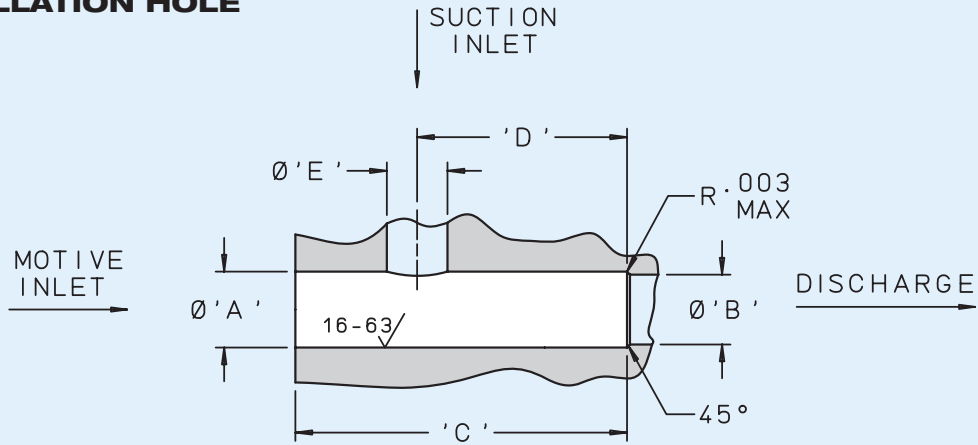


0.375" Diameter Model*



* See reverse side for installation hole dimensions.

INSTALLATION HOLE



INSERT Ø	Ø 'A'	Ø 'B'	'C' MIN	'D'	Ø 'E' MAX
.187	.1875 - .1880	.14 - .16	1.33	0.93	.125
.250	.2500 - .2505	.19 - .21	1.92	1.35	.188
.375	.3750 - .3755	.31 - .33	2.80	2.06	.250

Information Needed to Specify an Eductor

CUSTOMER:	
Program / System:	Function / Purpose: <ul style="list-style-type: none"> <input type="checkbox"/> Best Vacuum Performance <input type="checkbox"/> Best Suction Performance <input type="checkbox"/> High Backpressure Performance <input type="checkbox"/> Precision Dilution / Metering
System Characteristics:	
Motive / Primary (available)	Pressure: Flow: Fluid Type: Fluid Temp:
Suction / Secondary (required)	Pressure: Flow: Fluid Type: Fluid Temp:
Discharge / Downstream Pressure:	
Special Requirements:	Insert Diameter Required: Suction Flow Check Valve: Special Material:
Other Information:	